

The Smile ReLEx Femtosecond Laser correction



ReLEx Smile
Bladeless, Flapless, Painless,
All Laser correction
Experience

The Next Generation Laser
Vision Correction

ONLY at the

Mehta International Eye Institute
Asia's Most Advanced Eye Centre

www.mehtaeye.com

Why Have A ReLEx Smile Laser Done .



Your eyes deserve the very best

- Seeing is living. And we live through our eyes. They capture every moment, every experience life has to offer. It is said the real beauty of a smile lies in the eyes. So why let anything else get in the way of your SMILE? Well, with ReLEx, you don't have to any more!
- ReLEx smile is a breakthrough in laser vision correction offering a whole new level of precision, safety and comfort. With ReLEx smile you can look forward to superior visual outcomes that no other correction techniques can offer. In fact, you might just experience the world through a whole new lens - your natural

What is the ReLEx Smile Femto Second Laser

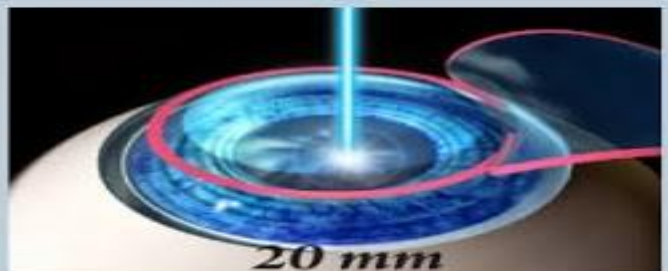
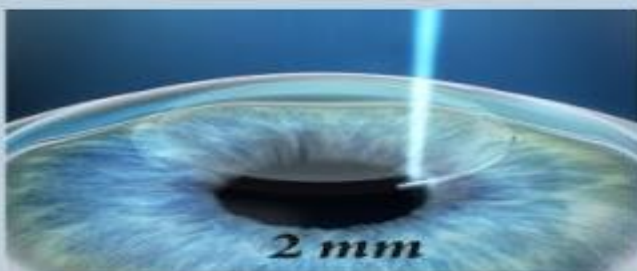


- ReLEx smile is an innovative treatment technique designed by Carl Zeiss, Germany, for precise and sensitive treatment of vision defects. For the first time ReLEx smile offers patients the possibility to undergo refractive correction without the need for a flap cut.
- The procedure, is the first and only bladeless and flapless minimally invasive 3D technique to visual freedom.
- Older vision correction techniques involve making a thin flap on the cornea and folding it back, allowing the tissue to be removed, point by point, using an excimer laser.
- ReLEx smile is different. The procedure involves the creation of an extremely thin 3D layer in your intact cornea, corresponding to your refractive number that needs correction. Entirely laser controlled, it is done in a few seconds - precise, safe and comfortable.

ReLEx SMILE

vs

LASIK

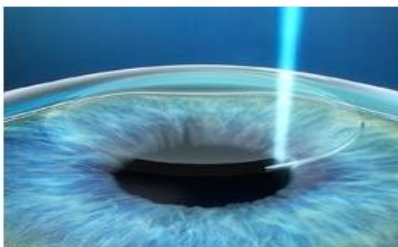


Advantages of doing Smile ReLEx Laser

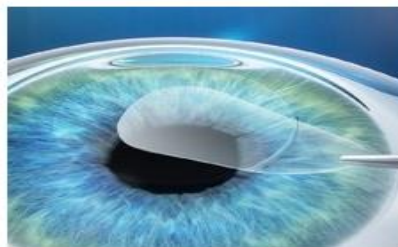


1. The cornea surface is left untouched, preserving its biomechanical strength and stability better than other techniques.
2. Inflammation is reduced to negligible as the total laser energy used is upto 10 times lesser than an excimer laser.
3. Likelihood of dry eyes is significantly lowered, since no flap is created.
4. There is no use of surgical cutting instruments and involves no change of equipment during the treatment.
5. The entire process takes place in one easy step with unmatched precision for an excellent visual outcome.
6. Since this procedure is minimally invasive, it involves minimum intervention and therefore less after care is required, enabling you to enjoy your new visual sensation right from day one.

SMILE with VisuMax



A refractive lenticule and small incision are created inside the intact cornea – all in one step.



The lenticule is subsequently removed through this small incision, leaving the remainder of the superficial cornea intact.



Removing the lenticule changes the shape of the cornea, thereby achieving the desired refractive correction.

ReLEx And Let Your Eyes Express



Who Can Benefit From 3rd Generation ReLex SMILE

SMILE is suitable for more people than LASiK, including those with very high prescriptions, drier eyes, contact lens intolerance, thinner corneas, or those playing contact sports.



How Long Does the ReLex SMILE Procedure Take?

Due to the advanced keyhole surgery method used, the SMILE treatment is done in 15 minutes. The recovery with SMILE is the shortest of any laser procedures.



Does the ReLex SMILE Procedure Hurt?

Unlike older techniques, SMILE is minimally invasive and the use of numbing drops make it the most comfortable laser eye surgery technique for patients.



Is ReLex SMILE Safer than Older Techniques?

Since no flap is created, there are no flap complications following the SMILE procedure. As corneal nerves are not disturbed, the patient does not suffer dry eyes.



How Many People Have Had ReLex SMILE?

Worldwide, over 500, 000 people have had SMILE with excellent results. SMILE was awarded FDA approval in 2016.



Fast

Precise

Painless

Flapless

ReLEx SMILE at “Mehta International Eye Institute”



- *The Mehta International Eye Institute is considered as one of the world's premier ophthalmic treatment, research and education center. One of the hallmarks of a quality eye care provider is its commitment to State-of-the-Art technology.*
- *MIEI (Mehta International Eye Institute) is among the select centers in world to offer the most innovative ReLEx SMILE technique for excellent vision. Our Internationally renowned physician possess the clinical and surgical expertise to provide consultations and medical care for complex ophthalmic problems.*
- *The Mehta International Eye Institute has an eye care team that provides professional support necessary to ensure that every patient receives personal attention. Our dedicated staff is highly trained in the art of patient care and draws on their many years of collective experience and assisting you.*



Mehta International Eye Institute

Sea Side, 147, Shahid Bhagat Singh Road,
Near Colaba Bus Station, Colaba, Mumbai 400005>

TEL: 22151303 / 22151676 Mobile: 9820031041 / 9892068684

Email : drkeiki@mehtaeyeinstitute.com

Website: www.mehtaeyeinstitute.com / www.mehtaeye.com



ISO-9001-2008
Certified Institute

Asia's Most Advanced Eye Center